

EXPLOSION PROOF
LIGHTING
ZONE 1 & ZONE 2



Presenting the SpectrumX Series

Seabright is a leading manufacturer of illumination devices for the marine and industrial sectors. Established in 1982.

The Seabright product series ranges in application from calm to harsh environments.





SEARCH RIGHT

KEY ADVANTAGES



- ✓ ATEX APPROVED ZONE 1 & 2
- ✓ VERY LOW WEIGHT
- ✓ WIDE RANGE OF OPERATING TEMPERATURES
- ✓ TEMPERATURE CLASS T1-T6

- ✓ WARRANTY LIFETIME OF 72.000 HRS (100% LIGHT OUTPUT REMAINING)
- ✓ MAINTENANCE FREE
- ✓ UP TO 80% SAVINGS
- ✓ DESIGNED AND PRODUCED FOR CHALLENGING MARINE AND SHORE BASED ENVIRONMENTS

CORROSION FREE

The aluminium body and stainless steel AISI 316L brackets of our SPECTRUMx series are corrosion resistant.

REPAIRABLE

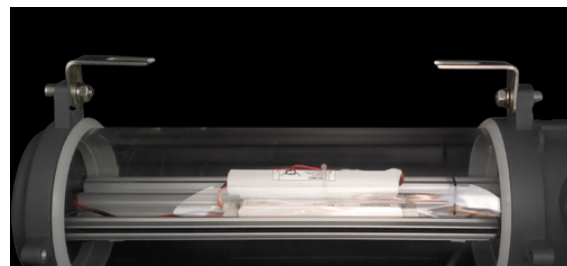
SPECTRUMx series meets the end users and operators' requirements. Our unit is 100% repairable after its warranty period. All spare parts of the fixture can be easily sourced and replaced.

SAVINGS

All our components are sourced from the EU, which in combination with our trouble-free housing, are covered by a 5-year warranty period. An approximate power and lifetime saving of 80% can be achieved.

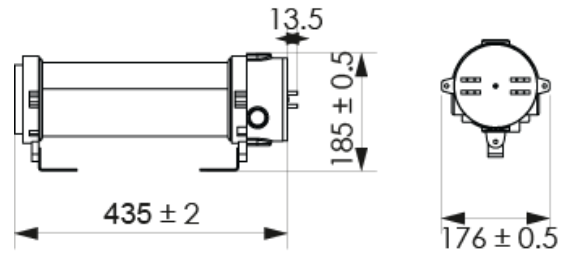
EFFECTIVE REPLACEMENT

Our SPECTRUMx series, is compatible with all the existing explosion proof tubes in the market. Our production facility has the flexibility to manufacture all types of mounting fixtures.





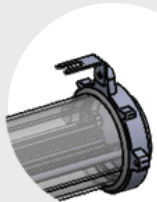
SPECTRUM^X LED 28-4-45



technical data



CERTIFICATE	EUROCERT 22 ATEX 0008
MARKING	II 2G Ex d IIB+H2 T6 Gb IP6X
PROTECTIVE ZONE	ZONE 1,2
LUMEN	312 LM
LED COLOR	4000K CRI<80
AMBIENT TEMPERATURE	-20°C TO +50°C
DEGREE OF PROTECTION	IP67
RESISTANCE TO SHOCK	IK08
RATED VOLTAGE	220-240V
FREQUENCY	50-60 HZ
RATED POWER	3W
CONNECTING TERMINALS	3 POLE N≡L
CABLE ENTRY	2X M25 CABLE INLETS
MOUNTING	2X M10 BOLTS
WEIGHT	3 KG



2 STAINLESS STEEL
BRACKETS
MOUNTING

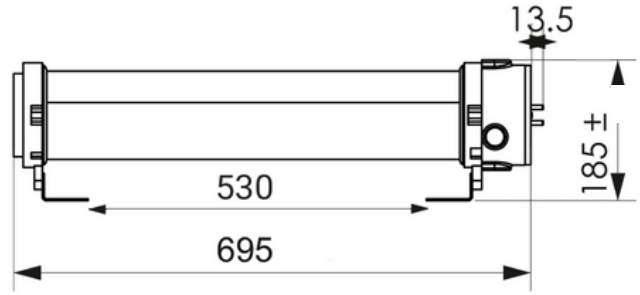
72.000 Hr
LED Lifetime



SEABRIGHT
MARINE BRIGHT SOLUTIONS



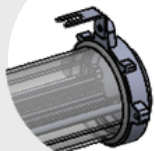
SPECTRUM^X LED 56-4



technical data



CERTIFICATE	EUROCERT 22 ATEX 0007
MARKING	EX II 2G EXDB IIC T6 GB
APPARATUS CATEGORY	2G
PROTECTIVE ZONE	ZONE 1,2
RATED POWER	18W
FREQUENCY	50-60 HZ
RATED VOLTAGE	220-240V (110V ON REQUEST)
LUMEN	2500 LM
LED COLOR	4000K
AMBIENT TEMPERATURE	-20°C TO +50°C
DEGREE OF PROTECTION	IP66
RESISTANCE TO SHOCK	IK08
PROTECTION CLASS	I (PROTECTIVE EARTHING)
CONNECTING TERMINALS	LNE AUTOMATIC TERMINAL MAX 2X2.5MM
CABLE ENTRY	2 CABLE ENTRIES M25
WEIGHT	5 KG



2 STAINLESS STEEL
BRACKETS
MOUNTING

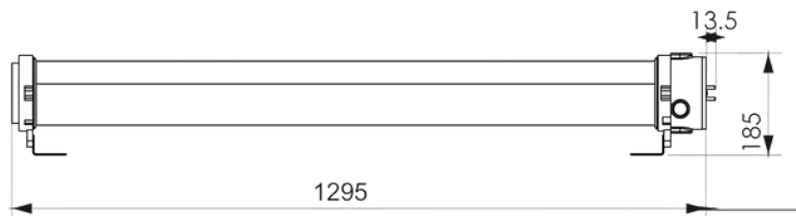
72.000 Hr
LED Lifetime



SEABRIGHT
MARINE BRIGHT SOLUTIONS



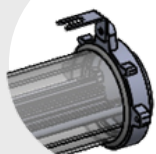
SPECTRUM^X LED 112-4



technical data



CERTIFICATE	EUROCERT 22 ATEX 0007
MARKING	EX II 2G EXDB IIC T6 GB
APPARATUS CATEGORY	2G
PROTECTIVE ZONE	ZONE 1,2
RATED POWER	33W
FREQUENCY	50-60 HZ
RATED VOLTAGE	220-240V (110V ON REQUEST)
LUMEN	5000 LM
LED COLOR	4000K
AMBIENT TEMPERATURE	-20°C TO +50°C
DEGREE OF PROTECTION	IP66
RESISTANCE TO SHOCK	IK08
PROTECTION CLASS	I (PROTECTIVE EARTHING)
CONNECTING TERMINALS	LNE AUTOMATIC TERMINAL MAX 2X2.5MM
CABLE ENTRY	2 CABLE ENTRIES M25
WEIGHT	8,5 KG



2 STAINLESS STEEL
BRACKETS
MOUNTING

72.000 Hr
LED Lifetime



SEABRIGHT
MARINE BRIGHT SOLUTIONS