

# CD25 - DOUBLE ACTING HYDRAULIC CYLINDER 250 BAR





**CYLINDER  
PRODUCER  
CINCE 1956**

**LEADING PROVIDER AND PRODUCER OF  
HYDRAULIC CYLINDERS, ACCUMULATORS AND DAMPERS**

# ABOUT US

Servi's factory in Rissa was established in 1936, and we began producing cylinders in 1956.

From the beginning, our products have been used in one of the world's roughest climates and in highly demanding operations. In order to meet the quality expectations of our customers, we are continually working to develop our products further.

Our customers operate within offshore, marine/shipping, hydropower/renewable energy, smelting and general industry. We have been ISO-9001:2008 certified since 1993. Our company also has several product certificates.

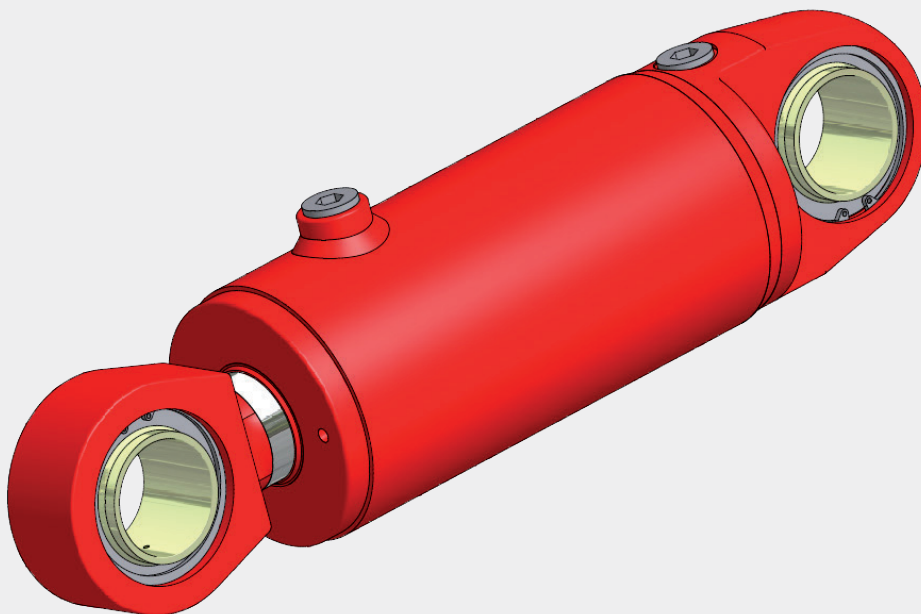
## We manufacture standard cylinders ....

Our CD25 cylinder is type-approved by DNV for pressures up to 250 bar, depending on stroke length. CD25 is a further developed and improved version of the CD-20 cylinder. CD25 has more opportunities when the requirements include low friction, high speed, low temperature, water / glycol-based substances or subsea use.

CD25 can be delivered with a piston diameter ranging from  $\varnothing 32$  mm -  $\varnothing 400$  mm.

We stock CD25 with dimensions from  $\varnothing 25$  mm -  $\varnothing 280$  mm piston diameter with spherical bearing at both ends of the cylinder.

You can custom design your own CD25 using our online drawing generator available at [www.servicatalogue.com](http://www.servicatalogue.com)





# ABOUT US



... but the majority of our manufacturing is based on customised solutions

**Servi offers a standard range of hydraulic cylinders, but most of our production is customised to meet the needs of our customers.**

We deliver cylinders, accumulators and dampers with piston diameters from Ø 20 - Ø 1500 mm and stroke lengths up to 20 m depending on dimensions and design, in both carbon steel and non-corrosive material qualities.

#### **Telescopic cylinders**

We construct and manufacture telescopic cylinders for all industries, based on the needs and specifications of our customers.

#### **Single operated/plunger cylinders**

We have years of experience delivering plunger cylinders for lifting bow ports, ferry quay ramps and so forth.

#### **Special cylinders**

We manufacture cylinders for various purposes within offshore, hydropower/renewable energy, marine/shipping, subsea and land based industry; cylinders of various designs, dimensions, pressure categories, material, integrated valves and sensors. Furthermore we manufacture servo cylinders for water turbines, as well as tension cylinders for risers on floating platforms.

**Servi** operates in close dialogue with our customers in order to achieve quality products which meet their requirements.

# We also produce ....

## Accumulators

### Piston accumulators

We also design and manufacture accumulators according to customer-specific requirements – e.g. with accessories such as end position switches, bursting discs, internal or external piston position indicators and so on, and in most materials.

The accumulators are manufactured in diameters from Ø 40 to Ø 1500 mm, and pressures up to 1500 bar, which is the upper limit for the type approval. Accumulators > 1 L are approved for CE-certification in accordance with PED-61-B. The certification also covers pressure tanks.



## Dampers

We have delivered a wide spectrum of dampers for various usages for a number of years.

### Some examples:

Passive heave compensation and shock absorption, with and without energy uptake, including for subsea use. Related to this, we deliver “Cranemaster” to the company Ernst-B. Johansen AS, the licensee (link: [www.cranemaster.no](http://www.cranemaster.no)).



Subsea soft landing dampers used for landing suspension for modules and equipment placed on the seabed.

Oscillation dampers for sports hall floors and other uses. End shock absorbers for crane / trolley movement. Dampers for Parawan winch systems on oil exploration vessels (seismical), including two-step dampers. These dampers are the result of our close cooperation with the company Vestdavit AS (link: [www.vestdavit.no](http://www.vestdavit.no))



## Heave compensation cylinders

Active and passive top compensators in derricks for drilling rigs, as well as combined active and passive heave compensation cylinders for winch systems for offshore and marine purposes.

# CD25

## Design pressure:

Dp: 250 Bar

## Brackets:

The brackets can be combined in a number of ways to customise installation.

### Bottom end

S- Spherical bearing  
E- Straight bearing  
A- Front flange  
B- Flange bottom end  
M- Swinging bracket  
H- Fork

### Rod end

S- Spherical bearing  
E- Straight bearing  
G- Threads  
D- Threaded rod ear  
F- Threaded rod flange  
H- Fork

## NB: Standard settings in stock are:

### Bottom end

S- Spherical bearing

### Rod end

S- Spherical bearing

## Rod surface:

H- 20-30my chrom

N- Nickel/chrome

(max Ø100, only for rod in C-material) Environments with moderate corrosion risk.

## Materials:

All materials are carbon steel, the rod can also be delivered in stainless steel and other materials.

Rod:

C- Carbon steel

Industrial usage, environments with no corrosion risk.

R- Stainless steel (1.4418)

Environments with corrosion risk.

# CD25

## Bearings:

S- Standard	Spherical bearing in carbon steel, must be lubricated.
B- Bronze	Spherical or straight bearings with carbon steel outer ring, must be lubricated, but a better solution with regard to corrosion.
C- Bronze	Spherical or straight bearing in composite material with carbon steel outer ring, must be lubricated, but a better solution with regard to corrosion.
D- Composite/bronze (Spherical)	Spherical bearing with bronze or stainless steel outer ring, can be used without lubrication and has excellent anti-corrosive properties.
R- Stainless Steel (Spherical)	Spherical bearing in stainless steel, maintenance-free.
V- Maintenance-free (Spherical)	Spherical bearing, maintenance-free, but has no corrosive capabilities.

## Seals:

S	Standard (max 0,5 m/s, -20°C - +80°C)
W	Water Glycol (max 0,5 m/s, -20°C - +40°C)
F	High temperature / speed, and low friction (max 15 m/s, -20°C - +200°C)
T	Low temperature -40°C (max 0,5 m/s, -40°C - +50°C)

## Classification of seal applications:

Code	Type	Description
S	Standard:	General use mineral-based hydraulic media.
W	Water Glycol:	Demanding uses and/or water-glycol-based media. No stick-slip.
F	High temp./speed. Low friction:	Low friction. For use in high temperature environments. No stick-slip.
L	Low temperature:	General use mineral-based hydraulic media.

**NB: Speed on standard cylinders is limited to approximately 0.5 m/s by the oil port connections. The type approval is only valid for temperatures up to +80°C.**

# CD25

## **Damping:**

C-	Damping both ends	Extra construction length read from table.
A-	Damping front	Extra construction length read from table.
B-	Damping bottom	Extra construction length read from table.

## **Sensors/switches:**

I-	Inductive switch both ends	On/off (signal).....Extra construction length read from table.
F-	Inductive switch front	On/ off (signal).....Extra construction length read from table.
B-	Inductive switch bottom	On/ off (signal).....Extra construction length read from table.
L-	Linear position sensor	Standard Balluff, analogue 4-20 mA, can also be supplied with Bus system. Extra construction length read from table.

## **ATEX / EX:**

CD25 can be delivered with most length sensors. Servi Cylinderservice uses Approved SCS Housing approved within ATEX code II 2 G | Ex d II B T4 Gb and IECEx kode Ex d II B T4 Gb.

## **Coatings:**

Servi Cylinderservice can supply cylinders with most types of coatings, from primer to metallic, Norsok M501 system 1 and system 7, etc. For more information about our standard coating systems, please consult the drawing generator for CD25 at [www.servicatalogue.com](http://www.servicatalogue.com)

## **Certification:**

CD25 is type-approved by DNV, has been designed within several regulation systems and can be certified by most acknowledged certification bodies, such as ABS, Lloyds and so forth.

## **Specialities:**

In addition to the options offered within the CD25 standard applications, Servi Cylinderservice can offer a range of special adaptations for materials, rod coatings, brackets, seals, bearings, pressure, sensors, position sensors, integration dimensions and so forth.

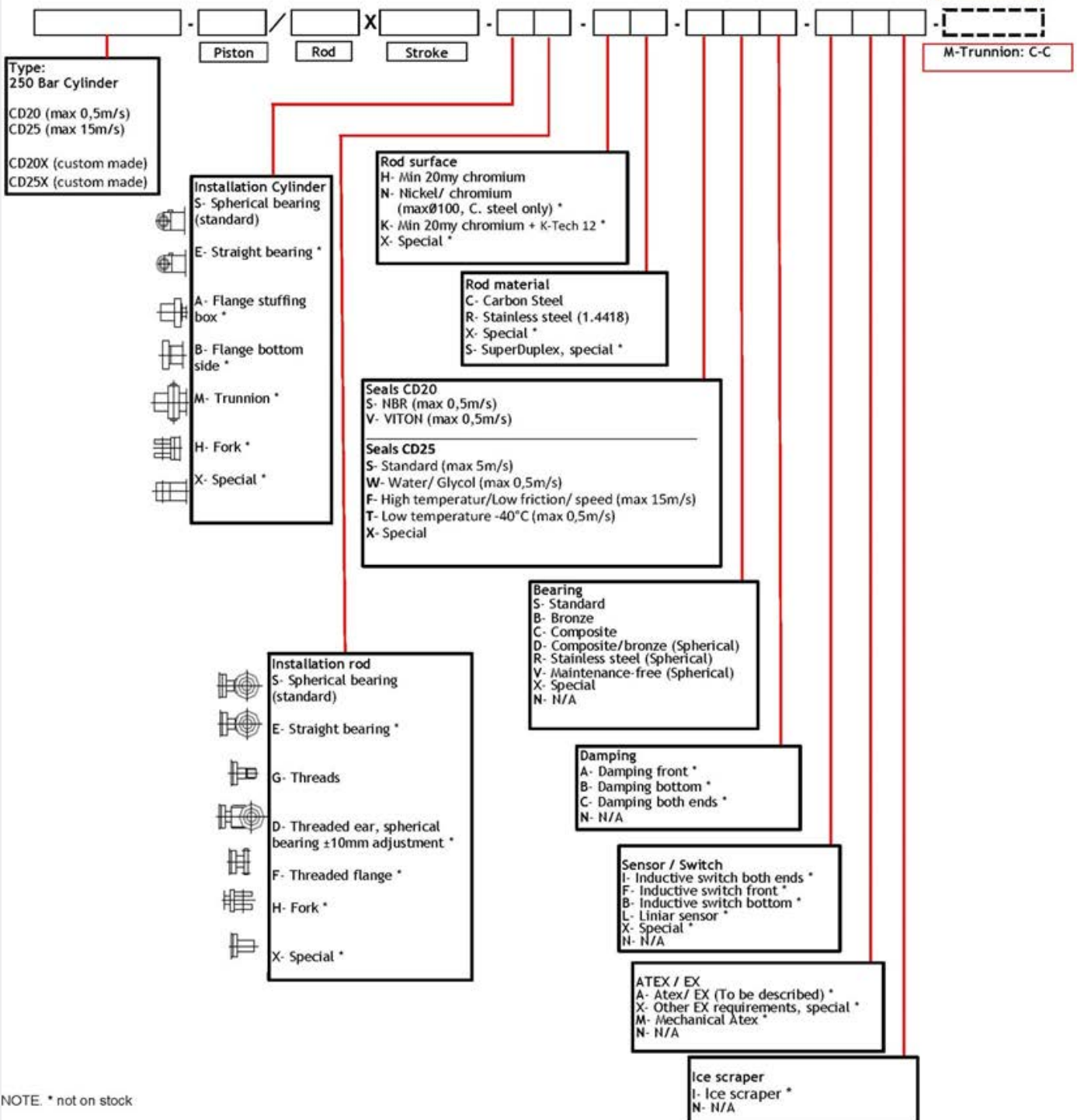
## **CD25 drawings/specifications:**

To download PDF datasheets or 2D or 3D drawings for most CAD software, as well as break calculations and cylinder power, please consult our drawing generator at [www.servicatalogue.com](http://www.servicatalogue.com)



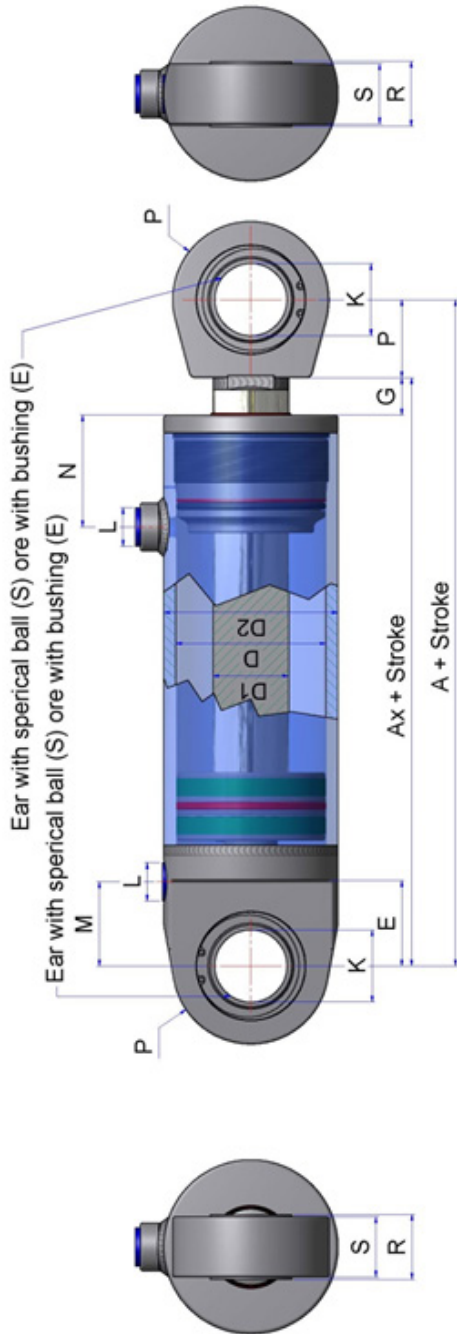
# CD25 model code

## Double action cylinders from Servo Cylinderservice, CD20 & CD25

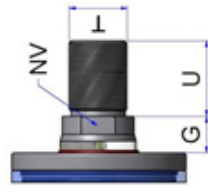


NOTE: \* not on stock

# CD25, S-E/S-E-G-D-F-H



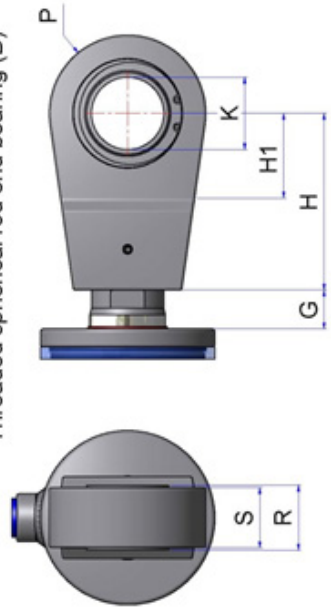
Threaded rod end G



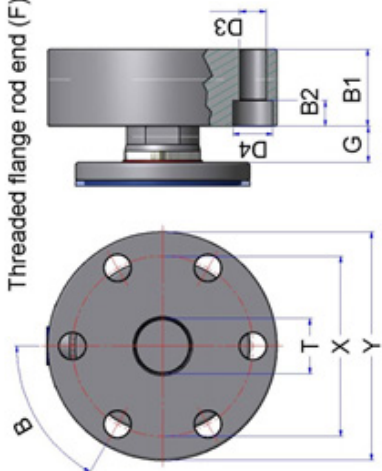
Welded fork ear (H)



Threaded spherical rod end bearing (D)



Threaded flange rod end (F)



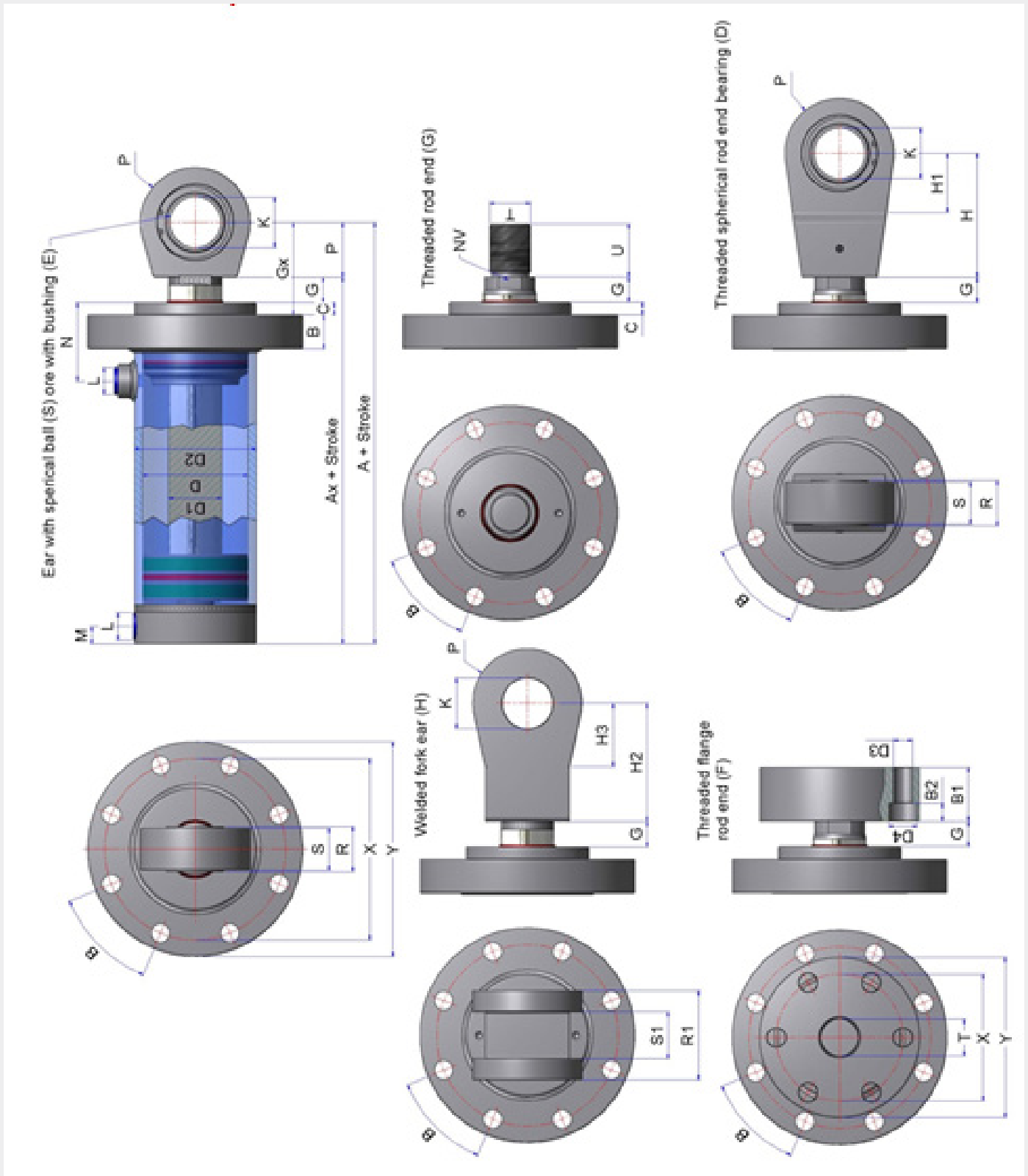
Type	Interface	D	A	AX	D1	D2	E	G	K	L	M	N	P	R	S	T	U	NV	H	H1	H2	H3	S1	R1	Y1	X1	J1	B1	B2	D3	AD*	AS**
CD25	S-E/S-E-G-D-F-H	32	163	140	20	40	23	12	20	G 1/4	37	42,5	25	24	20	M16x1,5	22	17	52	25	51	28	25	40	62	43	Ø7x4	23	7	11	NA	20
CD25	S-E/S-E-G-D-F-H	40	194	164	25	50	32	10	25	G 3/8	35	53	30	29	24	M20x1,5	28	22	70	35	62	33	30	50	72	53	Ø7x6	29	7	11	NA	20
CD25	S-E/S-E-G-D-F-H	50	190	160	25/32	60	32	20	25	G 3/8	26	51	30	29	24	M20x1,5	28	20	70	35	65	35	31	55	84	63	Ø9x6	29	9	15	50	20
CD25	S-E/S-E-G-D-F-H	63	215	180	32/40	73	40	20	30	G 3/8	34	60	35	30	28	M27x2	40	27	90	40	82	40	32	60	102	78	Ø11x6	37	11	18	50	20
CD25	S-E/S-E-G-D-F-H	80	240	200	40/50	95	45	25	35	G 1/2	37	64	40	35	32	M33x2	45	33	105	45	92	45	37	69	122	95	Ø13,5x8	46	13,5	20	50	20
CD25	S-E/S-E-G-D-F-H	90	270	220	45/56	105	50	25	45	G 1/2	48	68	50	40	38	M33x2	45	33	102	55	102	55	40	78	122	95	Ø13,5x8	46	13,5	20	50	20
CD25	S-E/S-E-G-D-F-H	100	305	252	50/63	120	63	30	50	G 3/4	56	77	53	43	40	M42x2	56	42	130	58	116	58	45	85	155	120	Ø17,5x8	57	17,5	26	50	20
CD25	S-E/S-E-G-D-F-H	110	320	265	56/70	130	63	30	50	G 3/4	60	85	55	43	40	M42x2	56	42	132	60	123	65	45	85	155	120	Ø17,5x8	57	17,5	26	50	20
CD25	S-E/S-E-G-D-F-H	125	355	290	63/80	145	71	30	60	G 3/4	70	93	65	54	50	M48x2	63	48	147	70	140	75	56	106	190	150	Ø22x8	64	22	33	60	20
CD25	S-E/S-E-G-D-F-H	140	375	302	70/90	165	80	30	70	G 3/4	79	93	73	65	60	M56x2	75	56	170	78	160	83	67	127	212	165	Ø22x8	76	22	33	60	20
CD25	S-E/S-E-G-D-F-H	160	420	340	80/100	185	90	35	80	G 1	85	106	80	74	70	M64x3	85	64	185	85	177	90	76	146	230	180	Ø26x8	86	26	40	60	20
CD25	S-E/S-E-G-D-F-H	180	440	357	90/110	210	90	35	80	G 1	88	113	83	74	70	M64x3	85	64	185	88	180	93	76	146	230	180	Ø26x8	86	26	40	60	20
CD25	S-E/S-E-G-D-F-H	200	470	380	100/125	230	100	35	90	G 1	97	120	90	85	80	M72x3	85	72	195	95	192	105	92	172	280	220	Ø33x8	86	33	50	80	20
CD25	S-E/S-E-G-D-F-H	220	620	508	100/140	254	140	40	110	G 1	166	165	112	110	80	M90x3	106	90	245	117	235	127	112	192	295	235	Ø33x8	107	33	50	80	20
CD25	S-E/S-E-G-D-F-H	250	675	548	110/160	298	160	40	120	G 1	186	176	127	120	90	M100x3	112	100	270	132	256	142	122	212	340	270	Ø39x8	113	39	58	80	20
CD25	S-E/S-E-G-D-F-H	280	745	599	125/180	324	180	40	140	G 1 1/4	210	187	146	140	100	M110x3	112	110	290	151	275	161	142	242	360	290	Ø39x10	113	39	58	80	20
CD25	S-E/S-E-G-D-F-H	300	790	636	125/180	343	180	50	140	G 1 1/4	210	200	154	140	100	M110x3	112	110	295	159	283	169	142	242	360	290	Ø39x10	113	39	58	90	20
CD25	S-E/S-E-G-D-F-H	320	835	672	140/220	368	200	50	160	G 1 1/4	230	200	163	160	115	M125x3	125	125	320	168	305	178	162	277	400	320	Ø45x8	126	45	69	90	20
CD25	S-E/S-E-G-D-F-H	360	900	720	180/220/250	419	215	50	180	G 1 1/4	245	218	180	180	150	M160x4	160	160	370	185	357	195	182	332	470	370	Ø52x8	161	52	78	90	20
CD25	S-E/S-E-G-D-F-H	400	990	770	200/250/280	470	245	50	200	G 1 1/4	275	228	220	200	160	M180x4	160	180	425	225	397	235	202	362	530	425	Ø52x10	161	52	78	90	20

Notes:

\* Additional length: 1 damping = Ad, 2 damping = 2 x AD.

\*\* Additional length: 1 switch O As, 2 switch O 2 x AS.

# CD25, A/S-E-G-D-F-H





Type	Interface	D	A	Ax	D1	D2	X	Y	B	J	D5	C	G	G1	K	L	M	N	P	R	S	T	U	NV	H	H1	H2	H3	S1	R1	Y1	X1	J1	B1	B2	D3	AD*	AS**
CD25	A/S-E-G-D-F-H	32	140	117	20	40	65	78	15	Ø9x6	9	5	12	40	20	G 1/4	14	42,5	25	24	20	M16x1,5	22	17	52	25	51	28	25	40	62	43	Ø7x4	23	7	11	NA	20
CD25	A/S-E-G-D-F-H	40	173	143	25	50	85	108	17	Ø11x6	11	5	10	45	25	G 3/8	14	53	30	29	24	M20x1,5	28	22	70	35	62	33	30	50	72	53	Ø7x6	29	7	11	NA	20
CD25	A/S-E-G-D-F-H	50	180	150	25/32	60	100	130	20	Ø13,5x6	13,5	10	20	60	25	G 3/8	15	51	30	29	24	M20x1,5	28	20	70	35	65	35	31	55	84	63	Ø9x6	29	9	15	50	20
CD25	A/S-E-G-D-F-H	63	195	160	32/40	73	115	145	20	Ø13,5x6	13,5	12	20	67	30	G 3/8	15	60	35	30	28	M27x2	40	27	90	40	82	40	32	60	102	78	Ø11x6	37	11	18	50	20
CD25	A/S-E-G-D-F-H	80	213	173	40/50	95	155	195	25	Ø17,5x6	17,5	12	25	77	35	G 1/2	17	64	40	35	32	M33x2	45	33	105	45	92	45	37	69	122	95	Ø13,5x8	46	13,5	20	50	20
CD25	A/S-E-G-D-F-H	90	233	183	45/56	105	165	205	30	Ø17,5x6	17,5	12	25	87	45	G 1/2	17	68	50	40	38	M33x2	45	33	102	55	102	55	40	78	122	95	Ø13,5x8	46	13,5	20	50	20
CD25	A/S-E-G-D-F-H	100	263	210	50/63	120	190	230	30	Ø22x6	22	15	30	98	50	G 3/4	21	77	53	43	40	M42x2	56	42	130	58	116	58	45	85	155	120	Ø17,5x8	57	17,5	26	50	20
CD25	A/S-E-G-D-F-H	110	277	222	56/70	130	200	240	35	Ø22x6	22	15	30	100	50	G 3/4	21	85	55	43	40	M42x2	56	42	132	60	123	65	45	85	155	120	Ø17,5x8	57	17,5	26	50	20
CD25	A/S-E-G-D-F-H	125	300	235	63/80	145	215	255	40	Ø22x8	22	15	30	110	60	G 3/4	21	93	65	54	50	M48x2	63	48	147	70	140	75	56	106	190	150	Ø22x8	64	22	33	60	20
CD25	A/S-E-G-D-F-H	140	311	238	70/90	165	235	275	45	Ø22x8	22	15	30	118	70	G 3/4	21	93	73	65	60	M56x2	75	56	170	78	160	83	67	127	212	165	Ø22x8	76	22	33	60	20
CD25	A/S-E-G-D-F-H	160	354	274	80/100	185	275	330	50	Ø26x8	26	20	35	135	80	G 1	25	106	80	74	70	M64x3	85	64	185	85	177	90	76	146	230	180	Ø26x8	86	26	40	60	20
CD25	A/S-E-G-D-F-H	180	371	288	90/110	210	300	355	55	Ø26x8	26	20	35	138	80	G 1	25	113	83	74	70	M64x3	85	64	185	88	180	93	76	146	230	180	Ø26x8	86	26	40	60	20
CD25	A/S-E-G-D-F-H	200	388	298	100/125	230	330	390	55	Ø33x8	33	20	35	145	90	G 1	25	120	90	85	80	M72x3	85	72	195	95	192	105	92	172	280	220	Ø33x8	86	33	50	80	20
CD25	A/S-E-G-D-F-H	220	480	368	100/140	254	375	440	60	Ø33x8	33	10	40	162	110	G 1	26	165	112	110	80	M90x3	106	90	245	117	235	127	112	192	295	235	Ø33x8	107	33	50	80	20
CD25	A/S-E-G-D-F-H	250	515	388	110/160	298	420	505	65	Ø39x8	39	10	40	177	120	G 1	26	176	127	120	90	M100x3	112	100	270	132	256	142	122	212	340	270	Ø39x8	113	39	58	80	20
CD25	A/S-E-G-D-F-H	280	565	419	125/180	324	445	530	70	Ø38x8	39	10	40	196	140	G 1 1/4	30	187	146	140	100	M110x3	112	110	290	151	275	161	142	242	360	290	Ø39x10	113	39	58	80	20
CD25	A/S-E-G-D-F-H	300	610	456	125/180	343	485	575	75	Ø45x8	45	10	50	214	140	G 1 1/4	30	200	154	140	100	M110x3	112	110	295	159	283	169	142	242	360	290	Ø39x10	113	39	58	90	20
CD25	A/S-E-G-D-F-H	320	635	472	140/220	368	510	600	75	Ø45x8	45	10	50	223	160	G 1 1/4	30	200	163	160	115	M125x3	125	125	320	168	305	178	162	277	400	320	Ø45x8	126	45	69	90	20
CD25	A/S-E-G-D-F-H	360	685	505	180/220/250	419	550	650	80	Ø52x8	52	10	50	240	180	G 1 1/4	30	218	180	180	150	M160x4	160	160	370	185	357	195	182	332	470	370	Ø52x8	161	52	78	90	20
CD25	A/S-E-G-D-F-H	400	745	525	200/250/280	470	610	700	90	Ø52x8	52	10	50	280	200	G 1 1/4	30	228	220	200	160	M180x4	160	180	425	225	397	235	202	362	530	425	Ø52x10	161	52	78	90	20

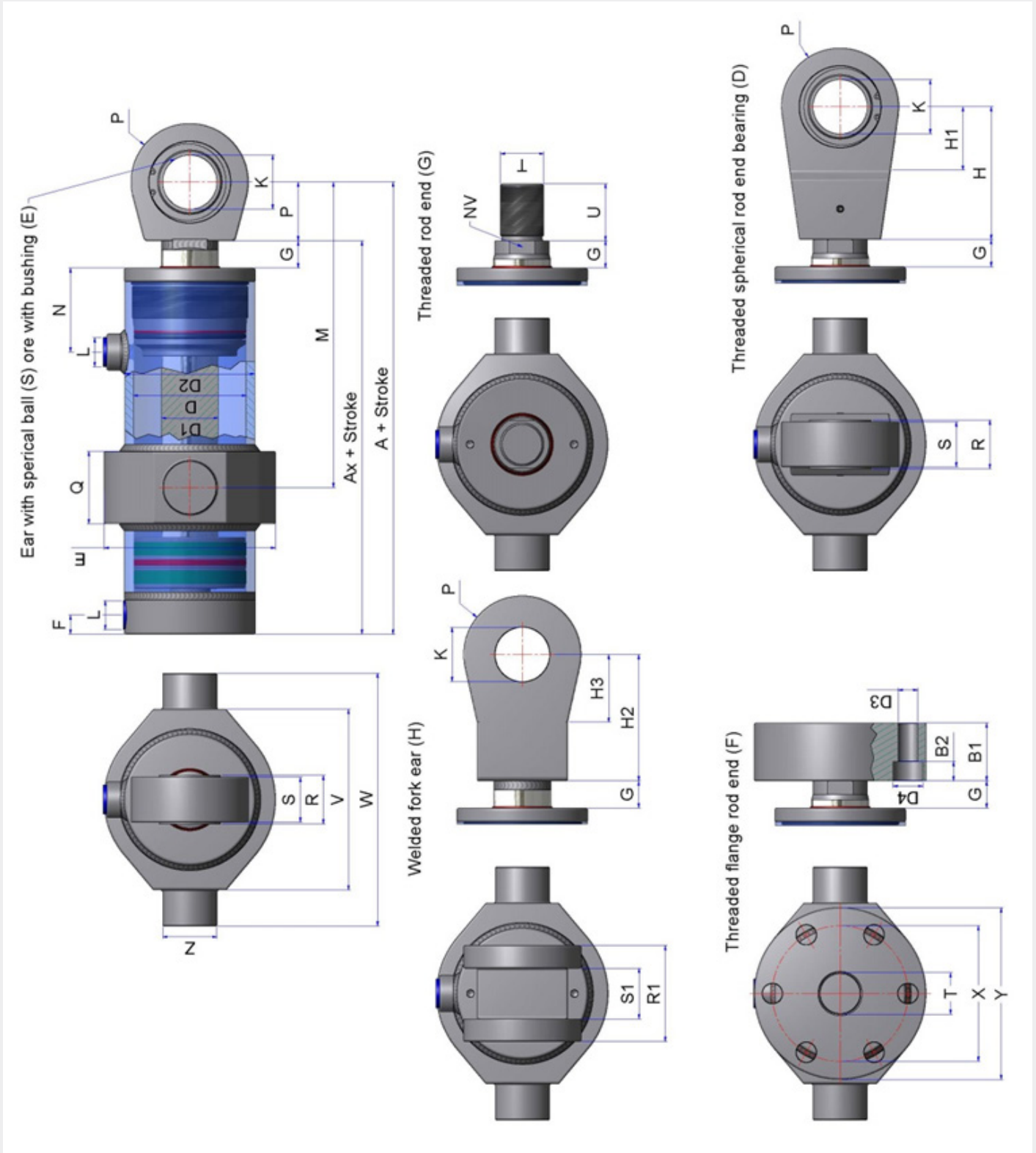
Notes:

\* Additional length: 1 damping = Ad, 2 damping = 2 x Ad.

\*\* Additional length: 1 switch 0 As, 2 switch 0 2 x As.



# CD25, M/S-E-G-D-F-H



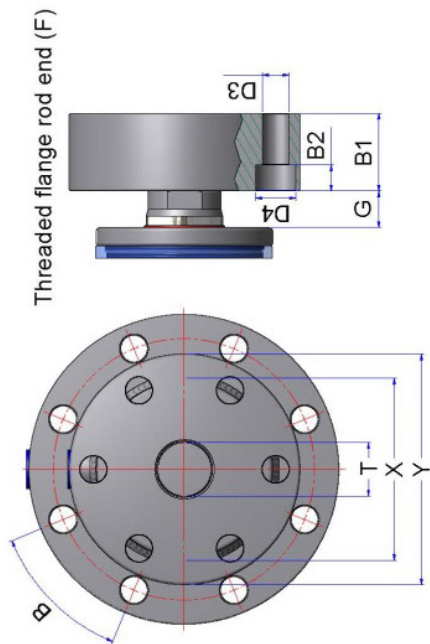
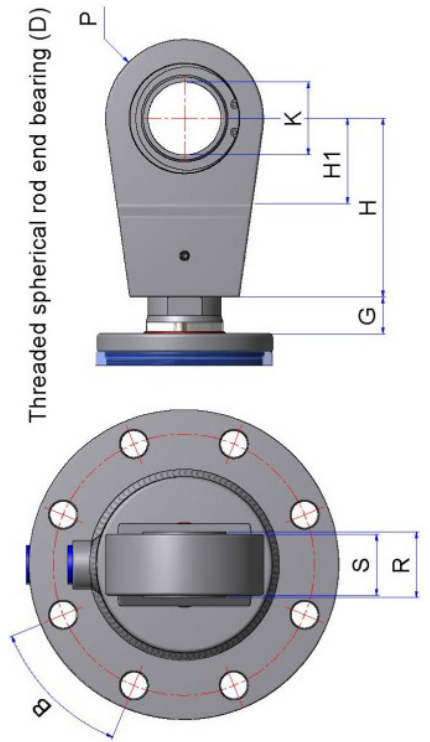
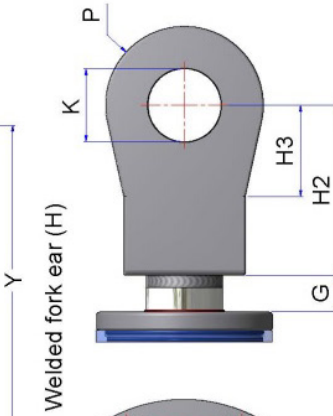
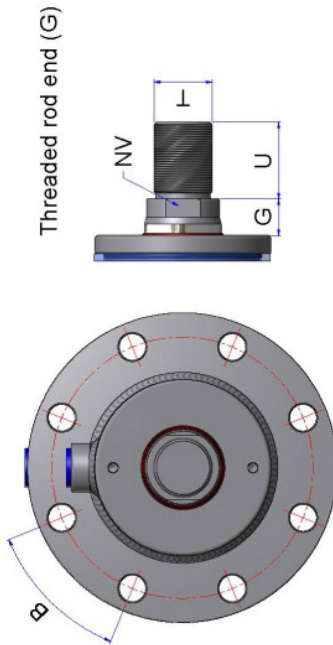
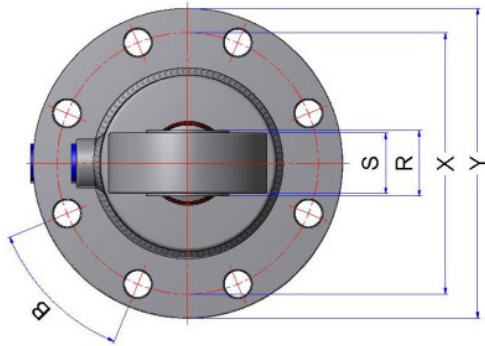
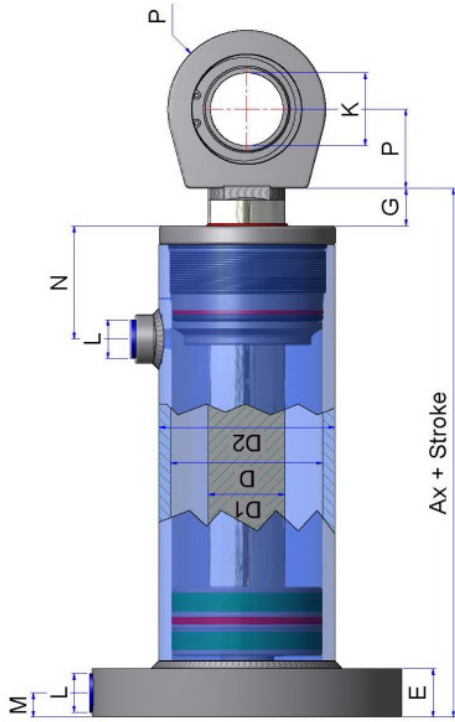
Type	Interface	D	A	Ax	D1	DZ	Q	E	V	W	Z	C-C min	G	K	L	W	N	P	R	S	T	U	HV	H	H1	H2	H3	S1	R1	Y1	X1	J1	B1	B2	D3	AD*	AS**
CD25	M/S-E-G-D-F-H	32	140	117	20	40	30	60	60	90	20	95	12	20	G 1/4	14	42,5	25	24	20	M16x1,5	22	17	52	25	51	28	25	40	62	43	Ø7x4	23	7	11	NA	20
CD25	M/S-E-G-D-F-H	40	173	143	25	50	40	70	70	100	25	140	10	25	G 3/8	14	53	30	29	24	M20x1,5	28	22	70	35	62	33	30	50	72	53	Ø7x6	29	7	11	NA	20
CD25	M/S-E-G-D-F-H	50	180	150	25/32	60	40	85	85	125	30	153,5	20	25	G 3/8	15	51	30	29	24	M20x1,5	28	20	70	35	65	35	31	55	84	63	Ø9x6	29	9	15	50	20
CD25	M/S-E-G-D-F-H	63	195	160	32/40	73	50	105	105	145	35	172,5	20	30	G 3/8	15	60	35	30	28	M27x2	40	27	90	40	82	40	32	60	102	78	Ø11x6	37	11	18	50	20
CD25	M/S-E-G-D-F-H	80	213	173	40/50	95	55	125	125	175	40	192,5	25	35	G 1/2	17	64	40	35	32	M33x2	45	33	105	45	92	45	37	69	122	95	Ø13,5x8	46	13,5	20	50	20
CD25	M/S-E-G-D-F-H	90	233	183	45/56	105	65	140	140	195	45	211,5	25	45	G 1/2	17	68	50	40	38	M33x2	45	33	102	55	102	55	40	78	122	95	Ø13,5x8	46	13,5	20	50	20
CD25	M/S-E-G-D-F-H	100	263	210	50/63	120	70	150	150	200	50	235	30	50	G 3/4	21	77	53	43	40	M42x2	56	42	130	58	116	58	45	85	155	120	Ø17,5x8	57	17,5	26	50	20
CD25	M/S-E-G-D-F-H	110	277	222	56/70	130	75	165	165	235	55	247,5	30	50	G 3/4	21	85	55	43	40	M42x2	56	42	132	60	123	65	45	85	155	120	Ø17,5x8	57	17,5	26	50	20
CD25	M/S-E-G-D-F-H	125	300	235	63/80	145	80	190	190	270	60	268	30	60	G 3/4	21	93	65	54	50	M48x2	63	48	147	70	140	75	56	106	190	150	Ø22x8	64	22	33	60	20
CD25	M/S-E-G-D-F-H	140	311	238	70/90	165	90	215	215	300	70	281	30	70	G 3/4	21	93	73	65	60	M56x2	75	56	170	78	160	83	67	127	212	165	Ø22x8	76	22	33	60	20
CD25	M/S-E-G-D-F-H	160	354	274	80/100	185	100	245	245	350	80	316	35	80	G 1	25	106	80	74	70	M64x3	85	64	185	85	177	90	76	146	230	180	Ø26x8	86	26	40	60	20
CD25	M/S-E-G-D-F-H	180	371	288	90/110	210	110	270	270	380	90	331	35	80	G 1	25	113	83	74	70	M64x3	85	64	185	88	180	93	76	146	230	180	Ø26x8	86	26	40	60	20
CD25	M/S-E-G-D-F-H	200	388	298	100/125	230	115	295	295	405	95	352,5	35	90	G 1	25	120	90	85	80	M72x3	85	72	195	95	192	105	92	172	280	220	Ø33x8	86	33	50	80	20
CD25	M/S-E-G-D-F-H	220	480	368	100/140	254	130	350	350	470	110	432	40	110	G 1	26	165	112	110	80	M90x3	106	90	245	117	235	127	112	192	295	235	Ø33x8	107	33	50	80	20
CD25	M/S-E-G-D-F-H	250	515	388	110/160	298	160	390	390	590	140	473	40	120	G 1	26	176	127	120	90	M100x3	112	100	270	132	256	142	122	212	340	270	Ø39x8	113	39	58	80	20
CD25	M/S-E-G-D-F-H	280	565	419	125/180	324	180	420	420	660	160	515,5	40	140	G 1 1/4	30	187	146	140	100	M110x3	112	110	290	151	275	161	142	242	360	290	Ø39x10	113	39	58	80	20
CD25	M/S-E-G-D-F-H	300	610	456	125/180	343	180	440	440	680	160	546,5	50	140	G 1 1/4	30	200	154	140	100	M110x3	112	110	295	159	283	169	142	242	360	290	Ø39x10	113	39	58	90	20
CD25	M/S-E-G-D-F-H	320	635	472	140/220	368	200	460	460	720	180	565,5	50	160	G 1 1/4	30	200	163	160	115	M125x3	125	125	320	168	305	178	162	277	400	320	Ø45x8	126	45	69	90	20
CD25	M/S-E-G-D-F-H	360	685	505	180/220/250	419	225	520	520	780	200	613	50	180	G 1 1/4	30	218	180	180	150	M160x4	160	160	370	185	357	195	182	332	470	370	Ø52x8	161	52	78	90	20
CD25	M/S-E-G-D-F-H	400	745	525	200/250/280	470	240	570	570	830	220	670,5	50	200	G 1 1/4	30	228	220	200	160	M180x4	160	180	425	225	397	235	202	362	530	425	Ø52x10	161	52	78	90	20

Notes:

\* Additional length: 1 damping = Ad, 2 damping = 2 x AD.

\*\* Additional length: 1 switch 0 As, 2 switch 0 2 x AS.

# CD25, B/S-E-G-D-F-H





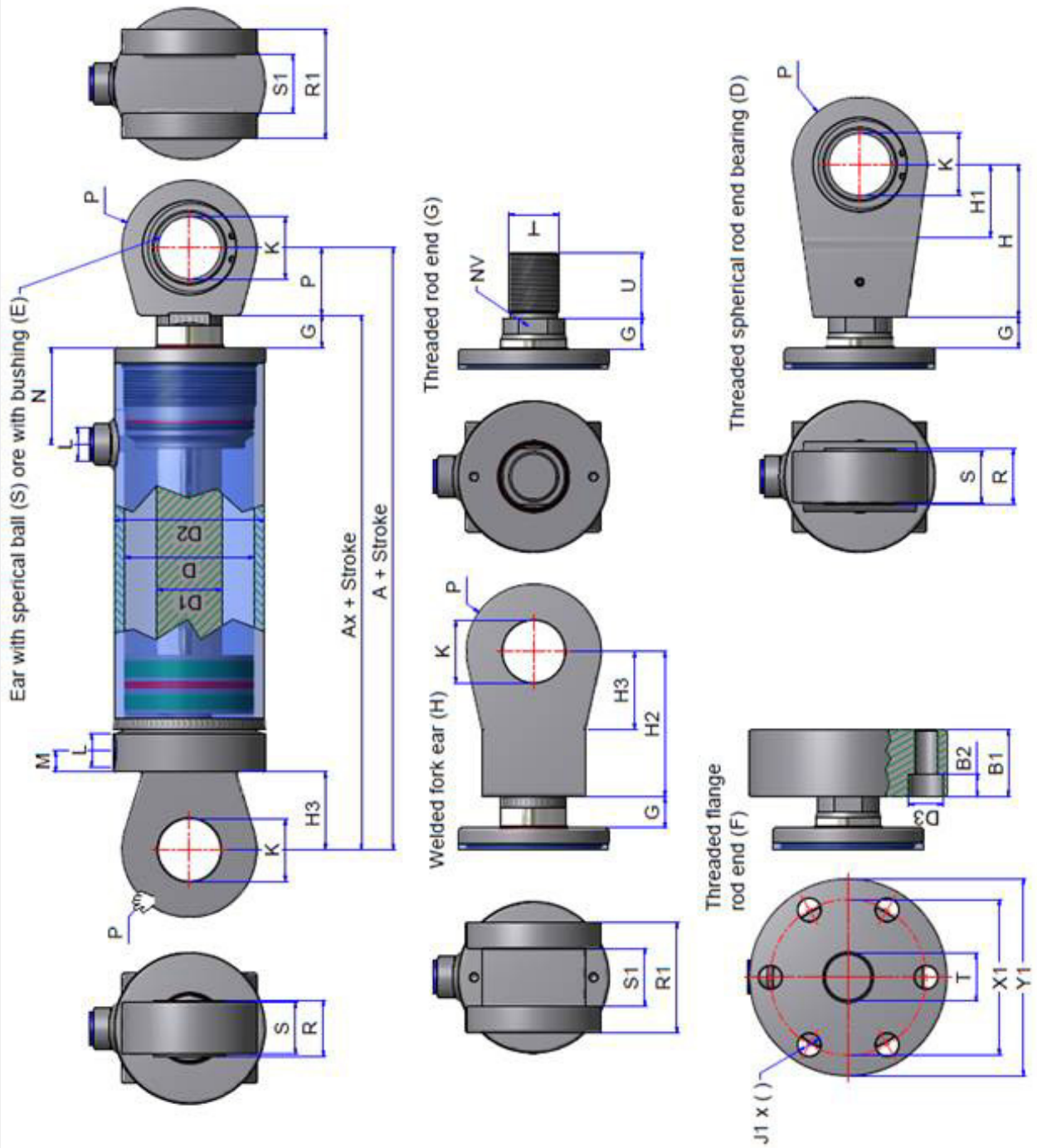
Type	Interface	D	A	Ax	D1	D2	X	Y	B	J	G	K	L	M	N	P	R	S	T	U	NV	H	H1	H2	H3	S1	R1	Y1	X1	J1	B1	B2	D3	AD*	AS**
CD25	B/S-E-G-D-F-H	32	137	114	20	40	65	78	24	Ø9x6	12	20	G 1/4	12	42,5	25	24	20	M16x1,5	22	17	52	25	51	28	25	40	62	43	Ø7x4	23	7	11	NA	20
CD25	B/S-E-G-D-F-H	40	172	142	25	50	85	108	27	Ø11x6	10	25	G 3/8	13,5	53	30	29	24	M20x1,5	28	22	70	35	62	33	30	50	72	53	Ø7x6	29	7	11	NA	20
CD25	B/S-E-G-D-F-H	50	175	145	25/32	60	100	130	25	Ø13,5x6	20	25	G 3/8	12,5	51	30	29	24	M20x1,5	28	20	70	35	65	35	31	55	84	63	Ø9x6	29	9	15	50	20
CD25	B/S-E-G-D-F-H	63	190	155	32/40	73	115	145	25	Ø13,5x6	20	30	G 3/8	12,5	60	35	30	28	M27x2	40	27	90	40	82	40	32	60	102	78	Ø11x6	37	11	18	50	20
CD25	B/S-E-G-D-F-H	80	213	173	40/50	95	155	195	30	Ø17,5x6	25	35	G 1/2	15	64	40	35	32	M33x2	45	33	105	45	92	45	37	69	122	95	Ø13,5x8	46	13,5	20	50	20
CD25	B/S-E-G-D-F-H	90	233	183	45/56	105	165	205	30	Ø17,5x6	25	45	G 1/2	15	68	50	40	38	M33x2	45	33	102	55	102	55	40	78	122	95	Ø13,5x8	46	13,5	20	50	20
CD25	B/S-E-G-D-F-H	100	258	205	50/63	120	190	230	35	Ø22x6	30	50	G 3/4	17,5	77	53	43	40	M42x2	56	42	130	58	116	58	45	85	155	120	Ø17,5x8	57	17,5	26	50	20
CD25	B/S-E-G-D-F-H	110	272	217	56/70	130	200	240	35	Ø22x6	30	50	G 3/4	17,5	85	55	43	40	M42x2	56	42	132	60	123	65	45	85	155	120	Ø17,5x8	57	17,5	26	50	20
CD25	B/S-E-G-D-F-H	125	300	235	63/80	145	215	255	40	Ø22x8	30	60	G 3/4	20	93	65	54	50	M48x2	63	48	147	70	140	75	56	106	190	150	Ø22x8	64	22	33	60	20
CD25	B/S-E-G-D-F-H	140	316	243	70/90	165	235	275	45	Ø22x8	30	70	G 3/4	22,5	93	73	65	60	M56x2	75	56	170	78	160	83	67	127	212	165	Ø22x8	76	22	33	60	20
CD25	B/S-E-G-D-F-H	160	354	274	80/100	185	275	330	50	Ø26x8	35	80	G 1	25	106	80	74	70	M64x3	85	64	185	85	177	90	76	146	230	180	Ø26x8	86	26	40	60	20
CD25	B/S-E-G-D-F-H	180	376	293	90/110	210	300	355	55	Ø26x8	35	80	G 1	27,5	113	83	74	70	M64x3	85	64	185	88	180	93	76	146	230	180	Ø26x8	86	26	40	60	20
CD25	B/S-E-G-D-F-H	200	395	305	100/125	230	330	390	60	Ø33x8	35	90	G 1	30	120	90	85	80	M72x3	85	72	195	95	192	105	92	172	280	220	Ø33x8	86	33	50	80	20
CD25	B/S-E-G-D-F-H	220	492	380	100/140	254	375	440	65	Ø33x8	40	110	G 1	32,5	165	112	110	80	M90x3	106	90	245	117	235	127	112	192	295	235	Ø33x8	107	33	50	80	20
CD25	B/S-E-G-D-F-H	250	532	405	110/160	298	420	505	70	Ø39x8	40	120	G 1	35	176	127	120	90	M100x3	112	100	270	132	256	142	122	212	340	270	Ø39x8	113	39	58	80	20
CD25	B/S-E-G-D-F-H	280	577	431	125/180	324	445	530	75	Ø38x8	40	140	G 1 1/4	37,5	187	146	140	100	M110x3	112	110	290	151	275	161	142	242	360	290	Ø39x10	113	39	58	80	20
CD25	B/S-E-G-D-F-H	300	627	473	125/180	343	485	575	80	Ø45x8	50	140	G 1 1/4	40	200	154	140	100	M110x3	112	110	295	159	283	169	142	242	360	290	Ø39x10	113	39	58	90	20
CD25	B/S-E-G-D-F-H	320	652	489	140/220	368	510	600	80	Ø45x8	50	160	G 1 1/4	40	200	163	160	115	M125x3	125	125	320	168	305	178	162	277	400	320	Ø45x8	126	45	69	90	20
CD25	B/S-E-G-D-F-H	360	692	512	180/220/250	419	550	650	80	Ø52x8	50	180	G 1 1/4	40	218	180	180	150	M160x4	160	160	370	185	357	195	182	332	470	370	Ø52x8	161	52	78	90	20
CD25	B/S-E-G-D-F-H	400	762	542	200/250/280	470	610	700	90	Ø52x8	50	200	G 1 1/4	45	228	220	200	160	M180x4	160	180	425	225	397	235	202	362	530	425	Ø52x10	161	52	78	90	20

Notes:

\* Additional length: 1 damping = Ad, 2 damping = 2 x Ad.

\*\* Additional length: 1 switch 0 As, 2 switch 0 2 x AS.

# CD25, H/S-E-G-D-F-H





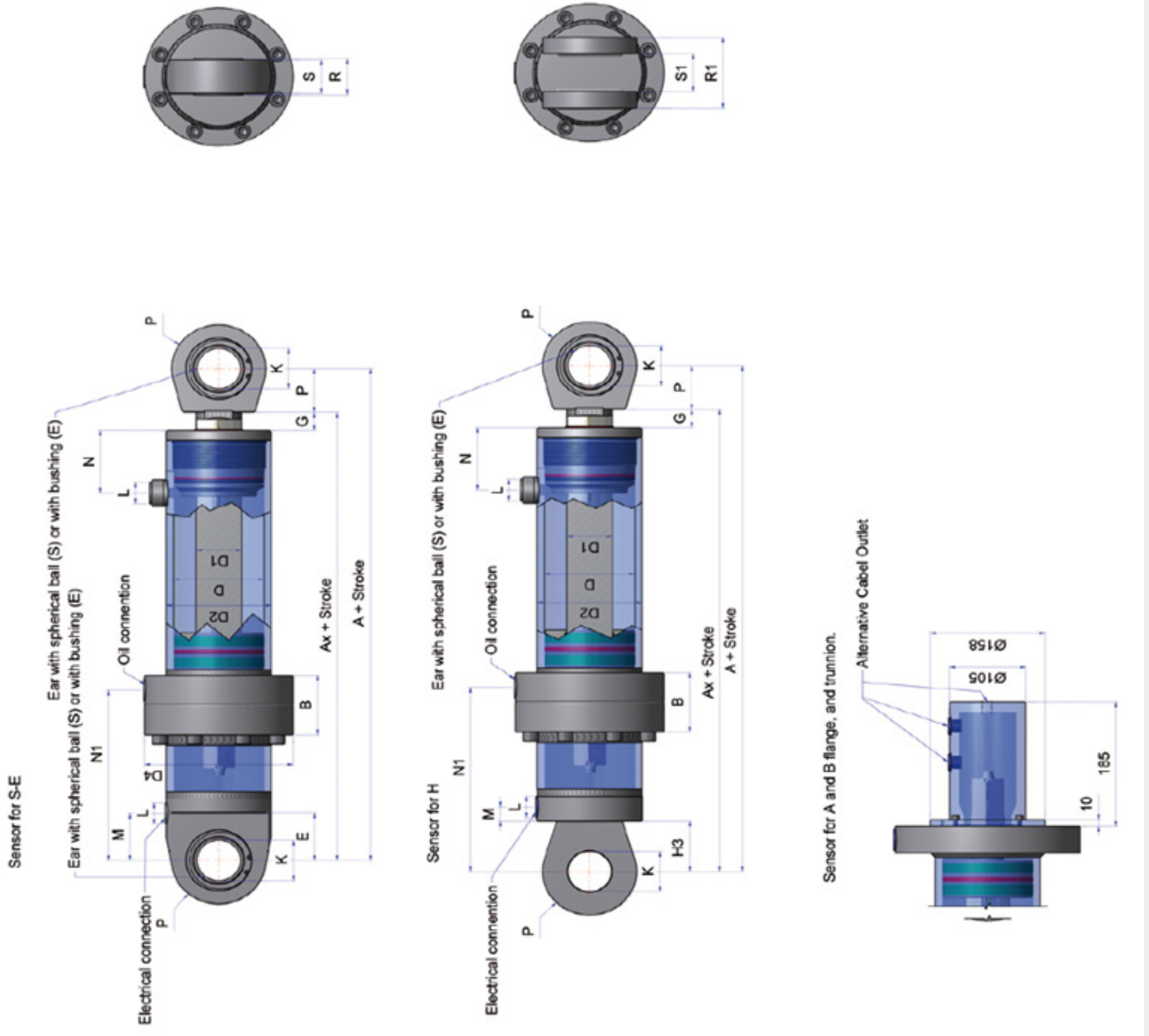
Type	Interface	D	A	Ax	D1	D2	G	K	L	M	N	P	R	S	T	U	NV	H	H1	H2	H3	S1	R1	Y1	X1	J1	B1	B2	D3	AD*	AS**
CD25	H/S-E-G-D-F-H	32	180	157	20	40	12	20	G 1/4	14	42,5	25	24	20	M16x1,5	22	17	52	25	51	28	25	40	62	43	Ø7x4	23	7	11	NA	20
CD25	H/S-E-G-D-F-H	40	218	188	25	50	10	25	G 3/8	14	53	30	29	24	M20x1,5	28	22	70	35	62	33	30	50	72	53	Ø7x6	29	7	11	NA	20
CD25	H/S-E-G-D-F-H	50	215	185	25/32	60	20	25	G 3/8	15	51	30	29	24	M20x1,5	28	20	70	35	65	35	31	55	84	63	Ø9x6	29	9	15	50	20
CD25	H/S-E-G-D-F-H	63	235	200	32/40	73	20	30	G 3/8	15	60	35	30	28	M27x2	40	27	90	40	82	40	32	60	102	78	Ø11x6	37	11	18	50	20
CD25	H/S-E-G-D-F-H	80	258	218	40/50	95	25	35	G 1/2	17	64	40	35	32	M33x2	45	33	105	45	92	45	37	69	122	95	Ø13,5x8	46	13,5	20	50	20
CD25	H/S-E-G-D-F-H	90	288	238	45/56	105	25	45	G 1/2	17	68	50	40	38	M33x2	45	33	102	55	102	55	40	78	122	95	Ø13,5x8	46	13,5	20	50	20
CD25	H/S-E-G-D-F-H	100	321	268	50/63	120	30	50	G 3/4	21	77	53	43	40	M42x2	56	42	130	58	116	58	45	85	155	120	Ø17,5x8	57	17,5	26	50	20
CD25	H/S-E-G-D-F-H	110	342	287	56/70	130	30	50	G 3/4	21	85	55	43	40	M42x2	56	42	132	60	123	65	45	85	155	120	Ø17,5x8	57	17,5	26	50	20
CD25	H/S-E-G-D-F-H	125	375	310	63/80	145	30	60	G 3/4	21	93	65	54	50	M48x2	63	48	147	70	140	75	56	106	190	150	Ø22x8	64	22	33	60	20
CD25	H/S-E-G-D-F-H	140	394	321	70/90	165	30	70	G 3/4	21	93	73	65	60	M56x2	75	56	170	78	160	83	67	127	212	165	Ø22x8	76	22	33	60	20
CD25	H/S-E-G-D-F-H	160	444	364	80/100	185	35	80	G 1	25	106	80	74	70	M64x3	85	64	185	85	177	90	76	146	230	180	Ø26x8	86	26	40	60	20
CD25	H/S-E-G-D-F-H	180	464	381	90/110	210	35	80	G 1	25	113	83	74	70	M64x3	85	64	185	88	180	93	76	146	230	180	Ø26x8	86	26	40	60	20
CD25	H/S-E-G-D-F-H	200	493	403	100/125	230	35	90	G 1	25	120	90	85	80	M72x3	85	72	195	95	192	105	92	172	280	220	Ø33x8	86	33	50	80	20
CD25	H/S-E-G-D-F-H	220	607	495	100/140	254	40	110	G 1	26	165	112	110	80	M90x3	106	90	245	117	235	127	112	192	295	235	Ø33x8	107	33	50	80	20
CD25	H/S-E-G-D-F-H	250	657	530	110/160	298	40	120	G 1	26	176	127	120	90	M100x3	112	100	270	132	256	142	122	212	340	270	Ø39x8	113	39	58	80	20
CD25	H/S-E-G-D-F-H	280	726	580	125/180	324	40	140	G 1 1/4	30	187	146	140	100	M110x3	112	110	290	151	275	161	142	242	360	290	Ø39x10	113	39	58	80	20
CD25	H/S-E-G-D-F-H	300	779	625	125/180	343	50	140	G 1 1/4	30	200	154	140	100	M110x3	112	110	295	159	283	169	142	242	360	290	Ø39x10	113	39	58	90	20
CD25	H/S-E-G-D-F-H	320	813	650	140/220	368	50	160	G 1 1/4	30	200	163	160	115	M125x3	125	125	320	168	305	178	162	277	400	320	Ø45x8	126	45	69	90	20
CD25	H/S-E-G-D-F-H	360	880	700	180/220/250	419	50	180	G 1 1/4	30	218	180	180	150	M160x4	160	160	370	185	357	195	182	332	470	370	Ø52x8	161	52	78	90	20
CD25	H/S-E-G-D-F-H	400	980	760	200/250/280	470	50	200	G 1 1/4	30	228	220	200	160	M180x4	160	180	425	225	397	235	202	362	530	425	Ø52x10	161	52	78	90	20

Notes:

\* Additional length: 1 damping = Ad, 2 damping = 2 x AD.

\*\* Additional length: 1 switch 0 As, 2 switch 0 2 x AS.

# CD25, SENSOR



Med lengdegiaver, for andre innfestinger i front se tabell "S-EIS-E-G-D-F-H"

Type	Interface	D	A	Ax	D1	D2	E	G	K	L	M	N	P	R	S	N1	D4	B
CD20/CD25	S-E/S	50	356	326	25/32	60	32	20	25	G 3/8	26	51	30	29	24	221	110	60
CD20/CD25	S-E/S	63	381	346	32/40	73	40	20	30	G 3/8	34	60	35	30	28	231	110	60
CD20/CD25	S-E/S	80	411	371	40/50	95	45	25	35	G 1/2	37	64	40	35	32	244	140	68
CD20/CD25	S-E/S	90	441	391	45/56	105	50	25	45	G 1/2	48	68	50	40	38	254	155	68
CD20/CD25	S-E/S	100	486	433	50/63	120	63	30	50	G 3/4	56	77	53	43	40	284	165	88
CD20/CD25	S-E/S	110	501	446	56/70	130	63	30	50	G 3/4	60	85	55	43	40	285	175	88
CD20/CD25	S-E/S	125	536	471	63/80	145	71	30	60	G 3/4	70	93	65	54	50	297	205	88
CD20/CD25	S-E/S	140	556	483	70/90	165	80	30	70	G 3/4	79	93	73	65	60	306	225	88
CD20/CD25	S-E/S	160	611	531	80/100	185	90	35	80	G 1	85	106	80	74	70	333	250	108
CD20/CD25	S-E/S	180	631	548	90/110	210	90	35	80	G 1	88	113	83	74	70	336	275	108
CD20/CD25	S-E/S	200	661	571	100/125	230	100	35	90	G 1	97	120	90	85	80	349	296	108
CD20/CD25	S-E/S	220	811	699	100/140	254	140	40	110	G 1	166	165	112	110	80	410	320	108
CD20/CD25	S-E/S	250	866	739	110/160	298	160	40	120	G 1	186	176	127	120	90	430	375	108
CD20/CD25	S-E/S	280	946	800	125/180	324	180	40	140	G 1 1/4	210	187	146	140	100	474	410	126
CD25	S-E/S	300	991	837	125/180	343	180	50	140	G 1 1/4	210	200	154	140	100	474	430	126
CD25	S-E/S	320	1036	873	140/220	368	200	50	160	G 1 1/4	230	200	163	160	115	494	450	126
CD25	S-E/S	360	1101	921	180/220/250	419	215	50	180	G 1 1/4	245	218	180	180	150	519	510	126
CD25	S-E/S	400	1191	971	200/250/280	470	245	50	200	G 1 1/4	275	228	220	200	160	549	560	126

Med lengdegiaver, for andre innfestinger i front se tabell "HIS-E-G-D-F-H"

Type	Interface	D	A	Ax	D1	D2	H3	G	K	L	M	N	P	R	S	N1	D4	B	S1	R1
LHA25	H/S	50	381	351	25/32	60	35	20	25	G 3/8	15	51	30	29	24	246	110	60	31	55
LHA25	H/S	63	401	366	32/40	73	40	20	30	G 3/8	15	60	35	30	28	251	110	60	32	60
LHA25	H/S	80	429	389	40/50	95	45	25	35	G 1/2	17	64	40	35	32	262	140	68	37	69
LHA25	H/S	90	459	409	45/56	105	55	25	45	G 1/2	17	68	50	40	38	272	155	68	40	78
LHA25	H/S	100	502	449	50/63	120	58	30	50	G 3/4	21	77	53	43	40	300	165	88	45	85
LHA25	H/S	110	523	468	56/70	130	65	30	50	G 3/4	21	85	55	43	40	307	175	88	45	85
LHA25	H/S	125	556	491	63/80	145	75	30	60	G 3/4	21	93	65	54	50	317	205	88	56	106
LHA25	H/S	140	575	502	70/90	165	83	30	70	G 3/4	21	93	73	65	60	325	225	88	67	127
LHA25	H/S	160	635	555	80/100	185	90	35	80	G 1	25	106	80	74	70	357	250	108	76	146
LHA25	H/S	180	655	572	90/110	210	93	35	80	G 1	25	113	83	74	70	360	275	108	76	146
LHA25	H/S	200	684	594	100/125	230	105	35	90	G 1	25	120	90	85	80	372	296	108	92	172
LHA25	H/S	220	798	686	100/140	254	127	40	110	G 1	26	165	112	110	80	397	320	108	112	192
LHA25	H/S	250	848	721	110/160	298	142	40	120	G 1	26	176	127	120	90	412	375	108	122	212
LHA25	H/S	280	927	781	125/180	324	161	40	140	G 1 1/4	30	187	146	140	100	455	410	126	142	242
LHA25	H/S	300	980	826	125/180	343	169	50	140	G 1 1/4	30	200	154	140	100	463	430	126	142	242
LHA25	H/S	320	1014	851	140/220	368	178	50	160	G 1 1/4	30	200	163	160	115	472	450	126	162	277
LHA25	H/S	360	1081	901	180/220/250	419	195	50	180	G 1 1/4	30	218	180	180	150	499	510	126	182	332
LHA25	H/S	400	1181	961	200/250/280	470	235	50	200	G 1 1/4	30	228	220	200	160	539	560	126	202	362

Notes:

\* Additional length: 1 damping = Ad, 2 damping = 2 x Ad.

\*\* Additional length: 1 switch 0 As, 2 switch 0 2 x AS.

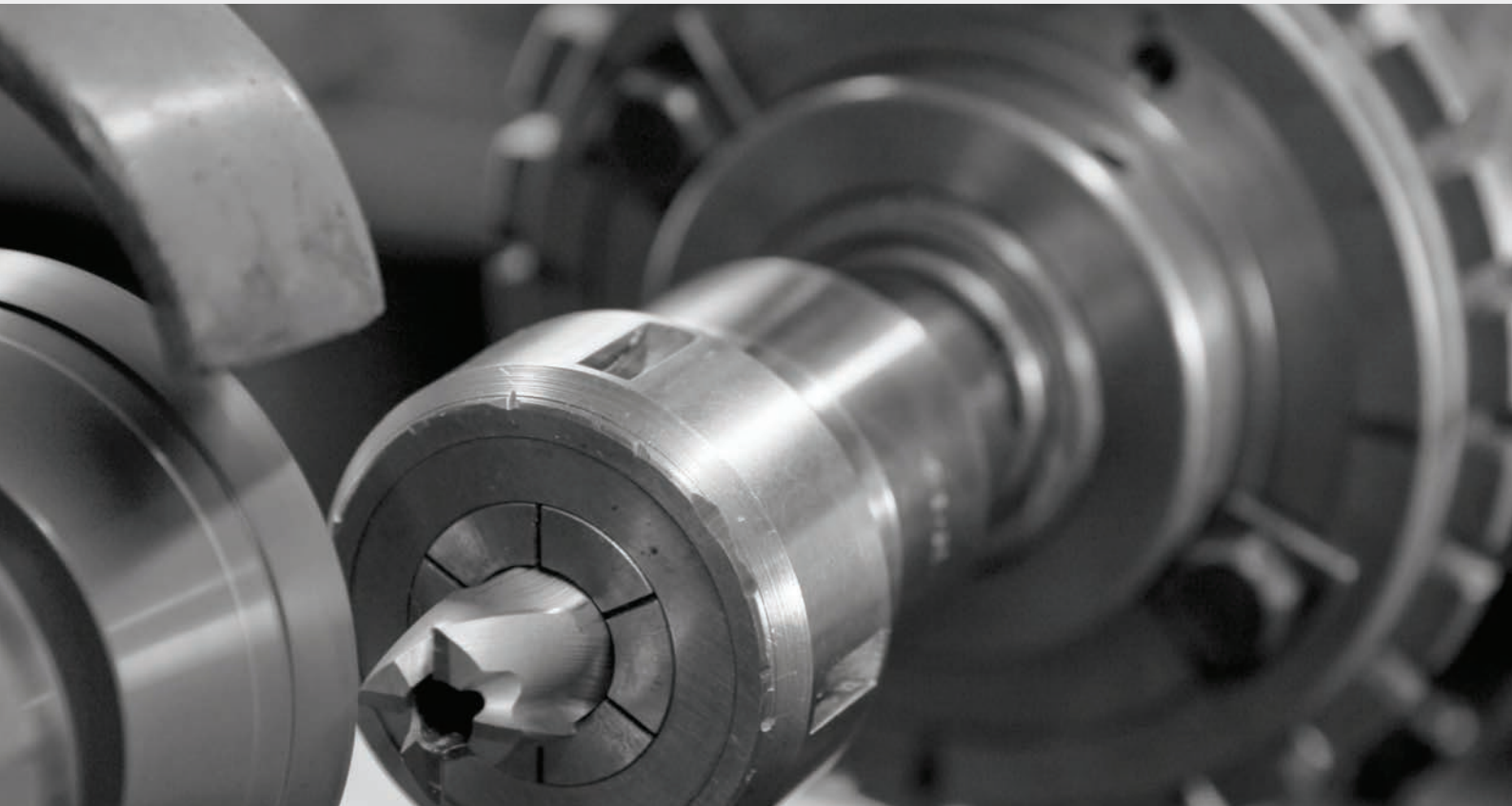


# ABOUT SERVI GROUP

Servi has comprehensive knowledge and expertise within Power and Motion Control, focused on in-house design and production of valves, valve blocks, cylinders, accumulators and HPUs.

In combination with a range of products from the world's leading suppliers of pumps, motors and valves, Servi offers quality components, complete turnkey solutions, service and maintenance

**Combined, Servi AS, Servi Ulsteinvik AS and Servi Hydraulik AB** have close to 300 employees across ten offices: Ski, Kongsberg, Tønsberg, Kristiansand, Bergen, Ålesund, Ulsteinvik, Trondheim, Rissa and Gothenburg.



## OUR AREAS OF EXPERTISE

- HYDRAULICS
- PNEUMATICS
- ELECTROMECHANICS
- SLIDING BEARINGS (TRIBOLOGY)
- TEST EQUIPMENT FOR CONSTRUCTION INDUSTRY
- WIPER SYSTEMS FOR MARINE AND OFFSHORE

# POWER AND MOTION CONTROL

COMPONENTS  
SYSTEMS  
SERVICE AND MAINTENANCE



**SERVI GROUP**

T +47 64 97 97 97  
post@servi.no  
www.servicatalogue.com

0025 STANDARD SYLINDERE 1701-1/EN

---

**WWW.SERVI.NO**